



Quarrix®

ProTect

DRAIN MAT



Quarrix ProTect Drain Mat creates a drainage plane and air cavity behind the cladding which helps prevent moisture damage to the walls and cladding. The ProTect Drain Mat also includes an extra 3” flap of the filter fabric that can be used for overlaps with other courses of the drainage mat or to create an insect screen at the top and bottom of the wall.

Notes:

- Cut with utility knife, scissors or shears
- Installed with staple hammer or nail gun
- Use staples, nails, cap screws or cap nails that are corrosion-resistant and minimum ½” length
- Not designed for extended UV exposure, cover within 30 days

Applications:

- Wood
- Fiber Cement
- Engineered Wood
- Brick and Stone
- Thin Brick/Manufactured Stone
- Stucco
- Composite Wood
- EIFS

INSTALLATION STEPS

STEP 1

Install a suitable water resistive barrier (WRB) over the exterior sheathing or continuous exterior insulation per the manufacturer’s installation instructions and complete flashing details. It is recommended to install the WRB at least ¾” below the bottom edge of the framing at the bottom of the wall in order to prevent moisture tracking from the siding to the framing.

STEP 2

Place the ProTect Drain Mat against the bottom of the wall so that the bottom edge of the drainage mesh aligns with the bottom edge of the WRB and roll out horizontally. The drainage mesh should be touching the WRB with the filter fabric to the outside and the 3” filter fabric flap will extend below the bottom edge of the WRB.

Note: When a weep screed is used, the bottom edge of the drainage mesh should align with the top of the weep screed.





ProTect

DRAIN MAT

STEP 3

Secure the ProTect Drain Mat to the wall by mechanically fastening with staples, nails, cap screws or cap nails that are corrosion-resistant and minimum 1/2" length, with one fastener per square foot. The ProTect Drain Mat will be permanently secured in place by the siding fasteners when the cladding is installed.

Note: Do not install fasteners through any flashings or weep screeds.

STEP 4

At the bottom of the wall, fold the 3" flap behind the drainage mesh and over the WRB along the bottom edge of the ProTect Drain Mat to create an insect screen. Fasten through the bottom of the ProTect Drain Mat so that the 3" flap is secured in place between the drainage mesh and WRB.

STEP 5

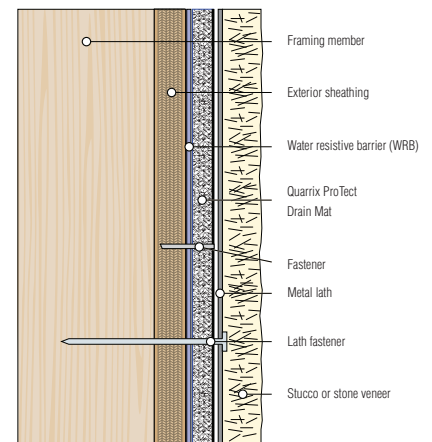
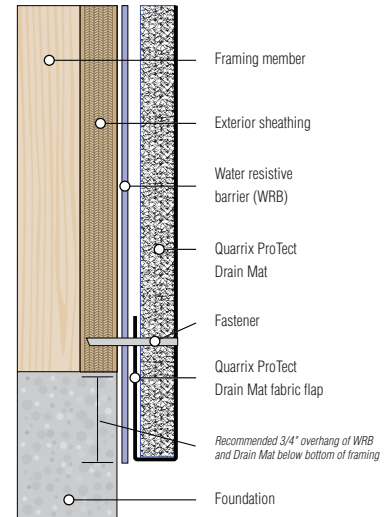
Once installed along the bottom of the wall, install additional courses by aligning ProTect Drain Mat so that the bottom edge of the drainage mesh butts up to the top of the course below and the 3" flap hangs down over the top of the lower course. The 3" flap may be tacked with a staple or construction adhesive if needed to hold in place. In order to maintain a level plane across the wall, do not overlap the drainage mesh at the seams between rolls.

STEP 6

With a utility knife, scissors or shears, cut the ProTect Drain Mat flush around all windows, doors, penetrations and along the top of the wall, making sure to not cut the WRB or any flashings behind the ProTect Drain Mat.

STEP 7

[Optional] If an insect screen is needed at the top of the wall, invert the top course of the ProTect Drain Mat with the 3" flap facing up and fold the flap behind the drainage mesh so that the flap is between the WRB and drainage mesh. Fasten through the ProTect Drain Mat so that the 3" flap is secured in place between the drainage mesh and WRB.



ProTect

DRAIN MAT

STEP 8

Stucco/Stone – Attach woven wire, expanded metal lathe or coated fiberglass stucco reinforcement over the ProTect Drain Mat per the manufacturer’s guidelines. Then apply stucco per the manufacturer’s installation instructions, making sure to include a minimum 1/4” gap at the top of the wall or install weeps per the manufacturer’s guidelines to promote airflow behind the cladding.

Thin Brick/Manufactured Stone – Attach woven wire, expanded metal lathe or coated fiberglass stucco reinforcement over the ProTect Drain Mat per the manufacturer’s guidelines. Next, apply a scratch coat per the manufacturer’s installation instructions. Then apply thin brick or stone per the manufacturer’s installation instructions, making sure to include a minimum 1/4” gap at the top of the wall or install weeps per the manufacturer’s guidelines to promote airflow behind the thin brick or stone.

Fiber Cement, Wood and Composite Wood – Install siding per manufacturer’s installation instructions, making sure to include a minimum 1/4” gap at the top of the wall or install weeps per the manufacturer’s guidelines to promote airflow behind the siding. Fasteners should accommodate the thickness of the ProTect Drain Mat and should not be overdriven.

