

**Quarrix**

# ProBoot

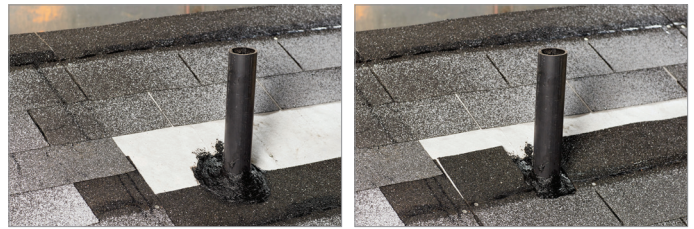
## PIPE FLASHING



### REPLACEMENT (RE-ROOF)

#### 1. ProBoot Pipe Preparation

Remove up to three courses of shingles above the existing pipe flashing to ensure that the back flange is covered by the shingles. Remove the existing pipe flashing and remove any old roof cement. Apply roofing cement around the pipe and underlayment, as it penetrates the roof to create a weather seal. If necessary, install new shingles up to the pipe penetration and notch shingles around the plumbing pipe.



#### 2. ProBoot Pipe Flashing Preparation

On painted ProBoot Pipes, remove the protective plastic layer. Place new ProBoot Pipe Flashing next to plumbing pipe and visually check pitch alignment. If pitch adjustment is needed, pinch front corners to increase the pitch or push down on the front of the ProBoot Pipe Flashing to decrease the pitch. The plumbing pipe should extend enough (2" to 3") above the base sleeve to allow for roof expansion and contraction.



#### 3. ProBoot Pipe Flashing Placement

Apply a bead of a polyurethane sealant on the rim of the plumbing pipe. Place the ProBoot Pipe Flashing over the plumbing pipe seating the TightLOCK™ Top on to the pipe. Turn the top clockwise 1/8" so that the TightLOCK Top is secured. Nail the base to the roof using the embossed guides. Install two nails into flange on the back of the base.



# ProBoot

PIPE FLASHING

## 4. Finishing

Continue installing shingles, lap the shingles over the side and back flanges (notch as required). Apply a bead of sealant to the exposed nail heads on the base.



## NEW CONSTRUCTION

### 1. Pipe Preparation

Apply roofing cement around the pipe and underlayment as it penetrates the roof to create a weather seal. Install shingles up to the pipe penetration, if necessary, notch shingles around the plumbing pipe.



### 2. ProBoot Pipe Flashing Preparation

On painted ProBoots Pipes, remove the protective plastic layer. Place new ProBoot Pipe Flashing next to plumbing pipe and visually check pitch alignment. If pitch adjustment is needed, pinch front corners to increase the pitch or push down on the front of the ProBoot Pipes to decrease the pitch. The plumbing pipe should extend enough (2" to 3") above the base sleeve to allow for roof expansion and contraction.



### 3. ProBoot Pipe Flashing Placement

Apply a bead of a polyurethane sealant on the rim of the plumbing pipe. Place the ProBoot Pipe Flashing over the plumbing pipe seating the TightLOCK Top on to the pipe. Turn the top clockwise 1/8" so that the TightLOCK Top is secured. Nail the base to the roof using the embossed guides. Install two nails into flange on the back of the base.



# ProBoot

PIPE FLASHING

## 4. Finishing

Continue installing shingles, lap the shingles over the side and back flanges (notch as required). Apply a bead of sealant to the exposed nail heads on the base.



## PROBOOT PIPE FLASHING EXTENDER

The Extender is designed to adapt the ProBoot Pipe Flashing for pipes that are 15" to 24" tall.

Simply slide the expanded end of the Extender on to the ProBoot inner sleeve. The plumbing pipe should extend enough (2" to 3") above the extender to allow for roof expansion and contraction. The Extender may be cut to size. Apply a bead of a polyurethane sealant on the rim of the plumbing pipe. Place the ProBoot Pipe Flashing over the plumbing pipe seating the TightLOCK Top on to the pipe. Turn the top clockwise 1/8" so that the TightLOCK Top is secured.

